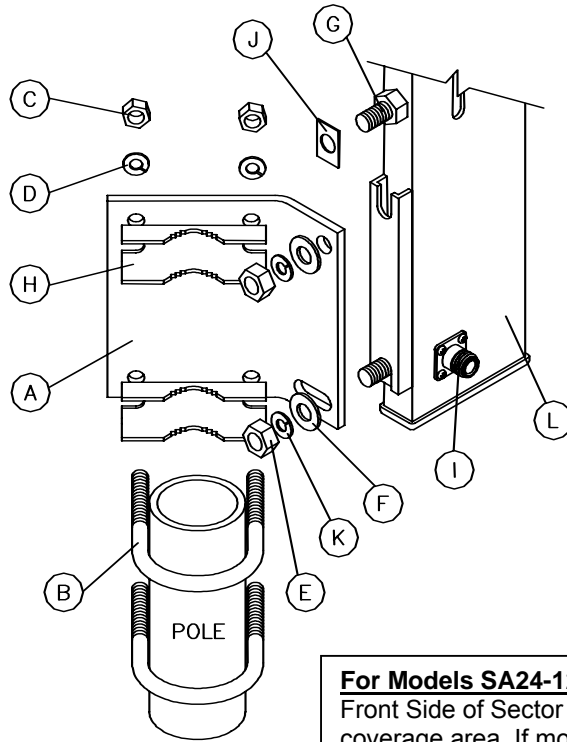


Installation Instructions

Sector and OmniDirectional Antenna



Item	Description	QTY
A	Mounting Plate	1
B	10mm U-Bolt	2
C	M10 Nut	4
D	M10 Lock Washer	4
E	M12 Nut	2
F	M12 Washer	2
G	M12 Hex Head Bolt	2
H	Saddle Clamp	2
I	N Female Connector	1
J	Rectangular Washer	2
K	M12 Lock Washer	2
L	Sector Antenna	1

For Models SA24-12 & SA24-16:

Front Side of Sector (N connector side) should be pointed towards intended coverage area. If more than one sector is used, spacing between antennas should be at least 4 feet to provide adequate separation.

Procedure:

1. Attach mounting plate to antenna using 2 hex head Bolts, 2 rectangular washers, 2 washers, 2 lock washers and nuts. Tighten finger tight only.
2. Attach 2 u-bolts loosely to mounting plate by inserting through saddle clamps and securing with nuts and lock washers on the front of the mounting plate.
3. Place antenna over pole, align horizontal direction by rotating on pole and tighten the u-bolt nuts. Torque to 150 in-lbs. Antenna downtilt is adjustable by loosening the lower mounting plate attachment nut. Tilt the antenna to the desired angle and tighten the adjustment nuts. Torque to 265 in-lbs to secure the antenna position. The bracket design allows for a maximum 10 degree downtilt of the antenna.
4. Attach a low loss signal cable to the integrated N female connector. Seal the connector joint with the waterproof sealing tape provided.

Note 1: The mounting bracket is suitable for pole diameters from 2 inches to 2³/₈ inches. Mounting poles and their supports should be designed to withstand the wind loads as required by the local building code.

Wind Loading	Loading Condition						Weight
	100mph		140mph		100mph ½ inch of radial ice		
Antenna Model	Maximum Horizontal Force	Maximum Bending Moment at the Clamp	Maximum Horizontal Force	Maximum Bending Moment at the Clamp	Maximum Horizontal Force	Maximum Bending Moment at the Clamp	
SA24-12 ODH24-9	25 lbf	360 in-lbf	48 lbf	710 in-lbf	34 lbf	500 in-lbf	6 lbs
SA24-16 ODH24-13	63 lbf	1770 in-lbf	124 lbf	3460 in-lbf	80 lbf	2220 in-lbf	9 lbs